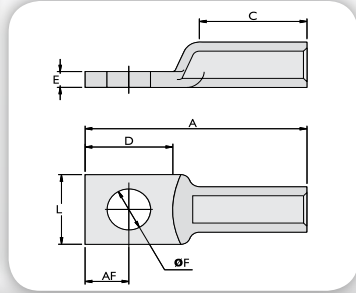


TAL TERMINAL DE ALUMÍNIO EXTRUDADO - um furo



Finalidade: Terminação cabo-barramento para cabos de alumínio CA ou CAA.

Características: Conexão por compressão. Alta condutividade elétrica e resistência a corrosão.

Aplicação: Redes de distribuição de energia elétrica.

Material: Alumínio extrudado. Fornecido com composto anti-óxido INTELTRON.

Normas: ABNT NBR-11788

Código INTELLI	Condutores			Dimensões (mm)									Ferramentas de Aplicação			
	CA compacto (mm ²)	AWG / MCM		Diâmetro Furo (ØF)	Parafuso		A	C	D	E	L	AF	Alicate Mecânico (AT-60 - 4t)		Alicate Hidráulico (AY-96 / CY-96)	
		CA	CAA		Pol.	Métrico							Matriz	Nº Compressões	Matriz	Nº Compressões
TAL-16	16	6	6	8,0	5/16	M8	66,0	32,0	26,0	4,0	18,0	13,0	IW-237	2	IU-237	1
TAL-28	-	Fio 5 AS		13,0	1/2	M12	66,0	32,0	26,0	4,0	18,0	13,0	IW-237	2	IU-237	1
TAL-32	25	4	4	13,0	1/2	M12	66,0	32,0	26,0	5,0	22,0	13,0	IW-239	2	IU-239	1
TAL-38	35	2	2	13,0	1/2	M12	66,0	32,0	26,0	5,0	22,0	13,0	IW-239	2	IU-239	1
TAL-44	50	1/0	1/0	14,0	1/2	M12	75,0	31,0	33,0	5,5	24,0	16,0	IW-243	2	IU-243	1
TAL-49	70	2/0	-	14,0	1/2	M12	75,0	31,0	33,0	5,5	24,0	16,0	IW-243	2	IU-243	1
TAL-58	95	3/0	-	14,0	1/2	M12	92,0	47,0	33,0	6,8	27,0	16,0	IW-247	4	IU-247	2
TAL-60	120	4/0	4/0	14,0	1/2	M12	92,0	41,0	33,0	8,2	32,0	16,0	IW-249	3	IU-249	1