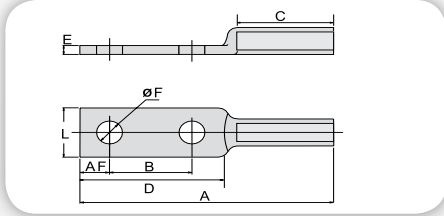


**TAL-2** TERMINAL DE ALUMÍNIO EXTRUDADO - dois furos



**Finalidade:** Terminação cabo-barramento para cabos de alumínio CA ou CAA.

**Características:** Conexão por compressão. Alta condutividade elétrica e resistência a corrosão. Furação padrão NEMA.

**Aplicação:** Redes de distribuição de energia elétrica.

**Material:** Alumínio extrudado. Fornecido com composto anti-óxido INTELTRON.

**Normas:** ABNT NBR-11788

Código INTELLI	Condutores			Dimensões (mm)										Ferramentas de Aplicação			
	CA compacto (mm <sup>2</sup> )	AWG / MCM		Diâmetro Furo (ØF)	Parafuso		A	B	C	D	E	L	AF	Alicate Mecânico (AT-60 - 4t)		Alicate Hidráulico (AY-96 / CY-96)	
		CA	CAA		Pol.	Métrico								Matriz	Nº Compressões	Matriz	Nº Compressões
TAL-32-2	25	4	4	14,0	1/2	M12	138,0	44,5	54,0	76,0	5,0	22,0	16,0	IW-239	4	IU-239	2
TAL-38-2	35	2	2	14,0	1/2	M12	138,0	44,5	54,0	76,0	5,0	22,0	16,0	IW-239	4	IU-239	2
TAL-44-2	50	1/0	1/0	14,0	1/2	M12	159,0	44,5	72,0	76,0	5,5	24,0	16,0	IW-243	4	IU-243	2
TAL-49-2	70	2/0	-	14,0	1/2	M12	155,0	44,5	66,0	76,0	6,0	24,0	16,0	IW-243	6	IU-243	3
TAL-58-2	95	3/0	-	14,0	1/2	M12	160,0	44,5	72,0	76,0	6,8	27,0	16,0	IW-247	6	IU-247	3
TAL-60-2	120	4/0	4/0	14,0	1/2	M12	170,0	44,5	81,0	78,0	8,2	32,0	16,0	IW-249	6	IU-249	3
TAL-150-2	150	250	-	14,0	1/2	M12	165,0	44,5	65,0	78,0	9,7	37,0	16,0	-	-	IU-251	4
TAL-72-2	185	336,4	-	14,0	1/2	M12	170,0	44,5	72,0	78,0	9,0	37,0	16,0	-	-	IU-321	5
TAL-80-2	240	397,5	336,4	14,0	1/2	M12	194,0	44,5	94,0	78,0	10,0	42,0	16,0	-	-	IU-316	6
TAL-92-2	300	556,5	-	14,0	1/2	M12	205,0	44,5	105,0	76,0	11,0	50,0	16,0	-	-	IU-261	5